

Did you **remember**
to rate the previous
session ?



What SAFe doesn't tell you

Piet Syhler, Frank Olsen





**Click 'Rate Session'
to rate session
and ask questions.**




A strategic and trusted provider

Serving the top investment managers worldwide



 **Schroders**


UNIQA

challenger 

 **UNIGESTION**


ALTE LEIPZIGER

 **HOOPP**
Healthcare of Ontario
Pension Plan

 **FannieMae**

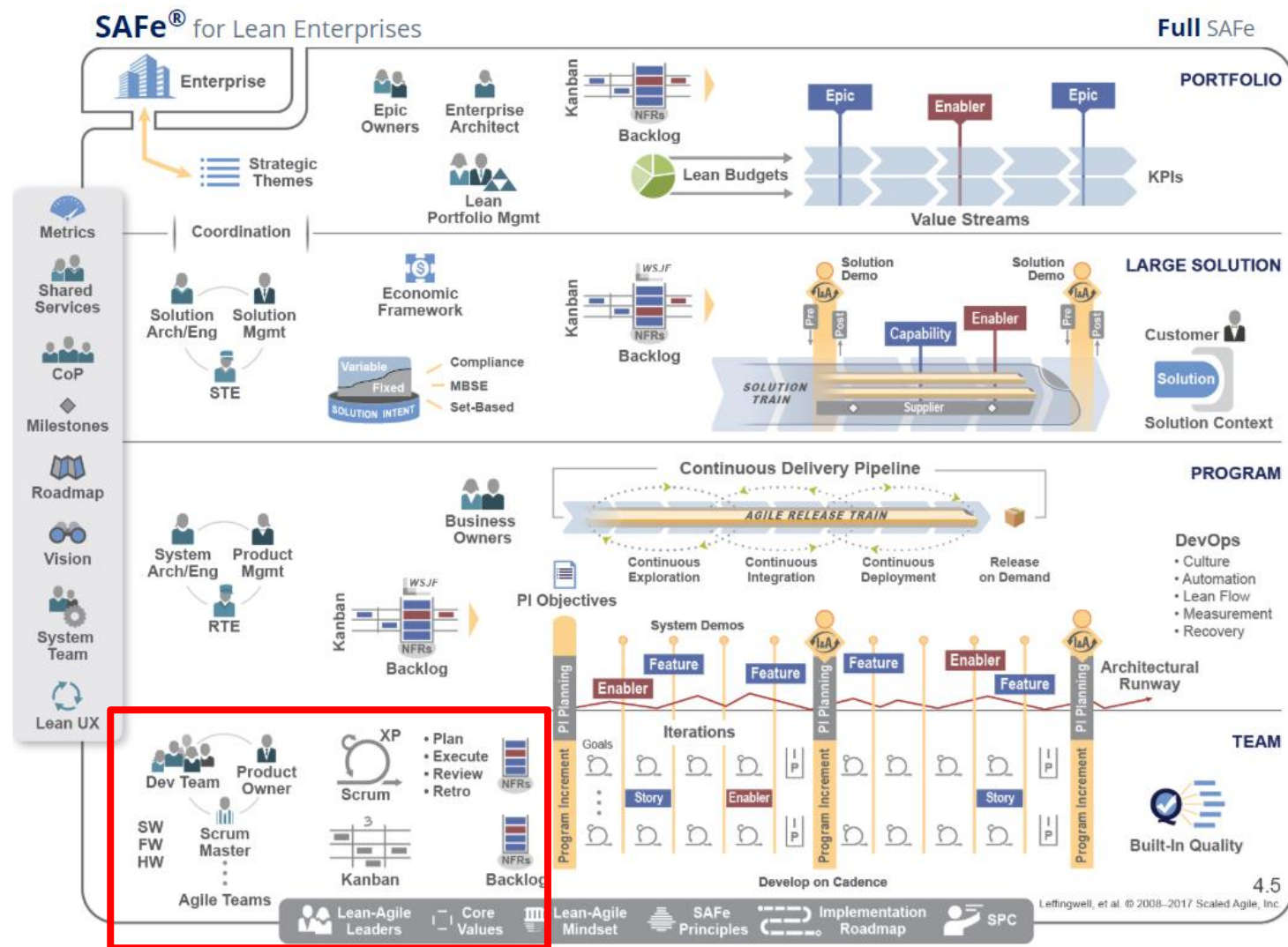
sampension 

MEAG

Nordea 

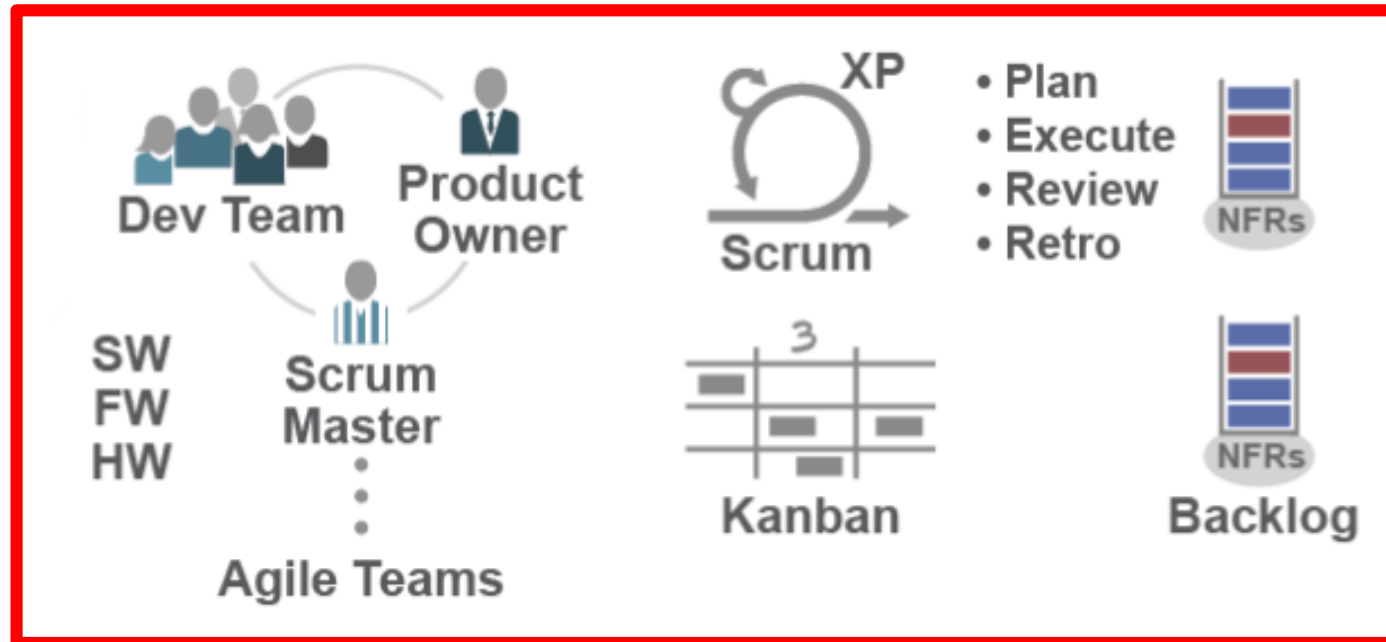
ONE TEAM SCRUM

HOW HARD CAN IT BE?



ONE TEAM SCRUM

HOW HARD CAN IT BE?



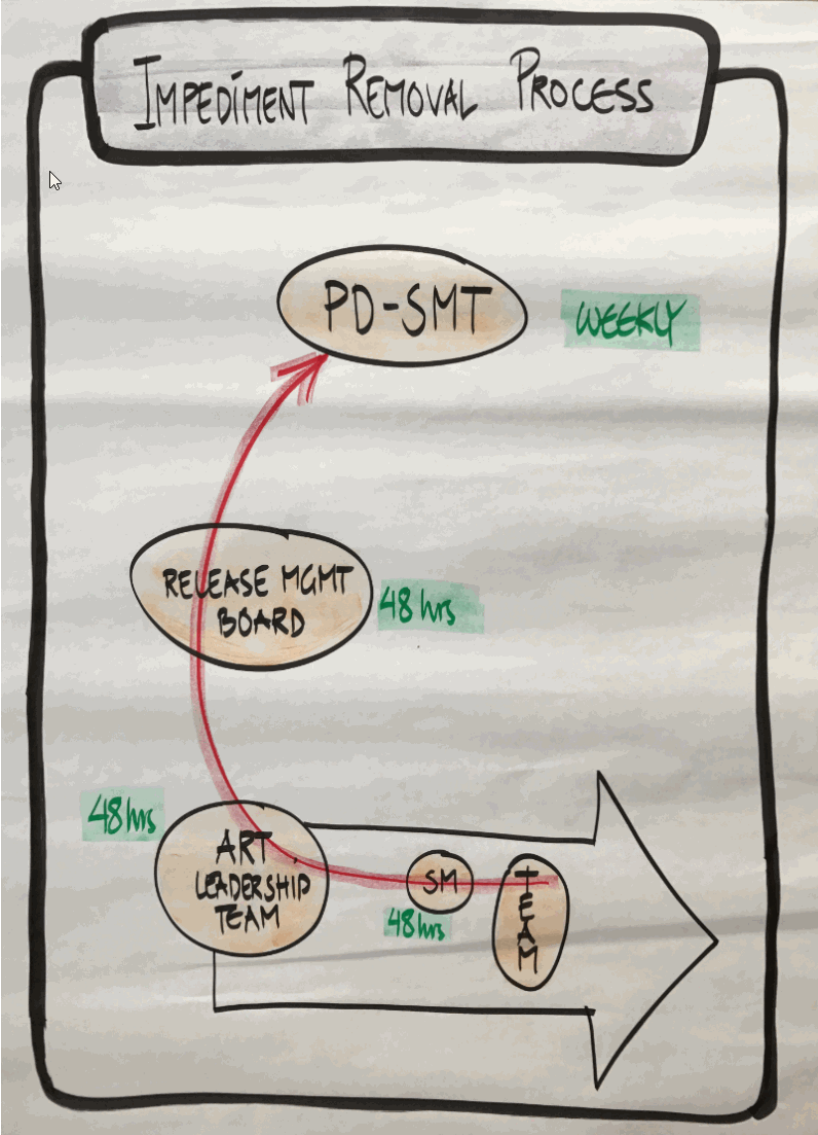
ONE TEAM SCRUM

HOW HARD CAN IT BE?



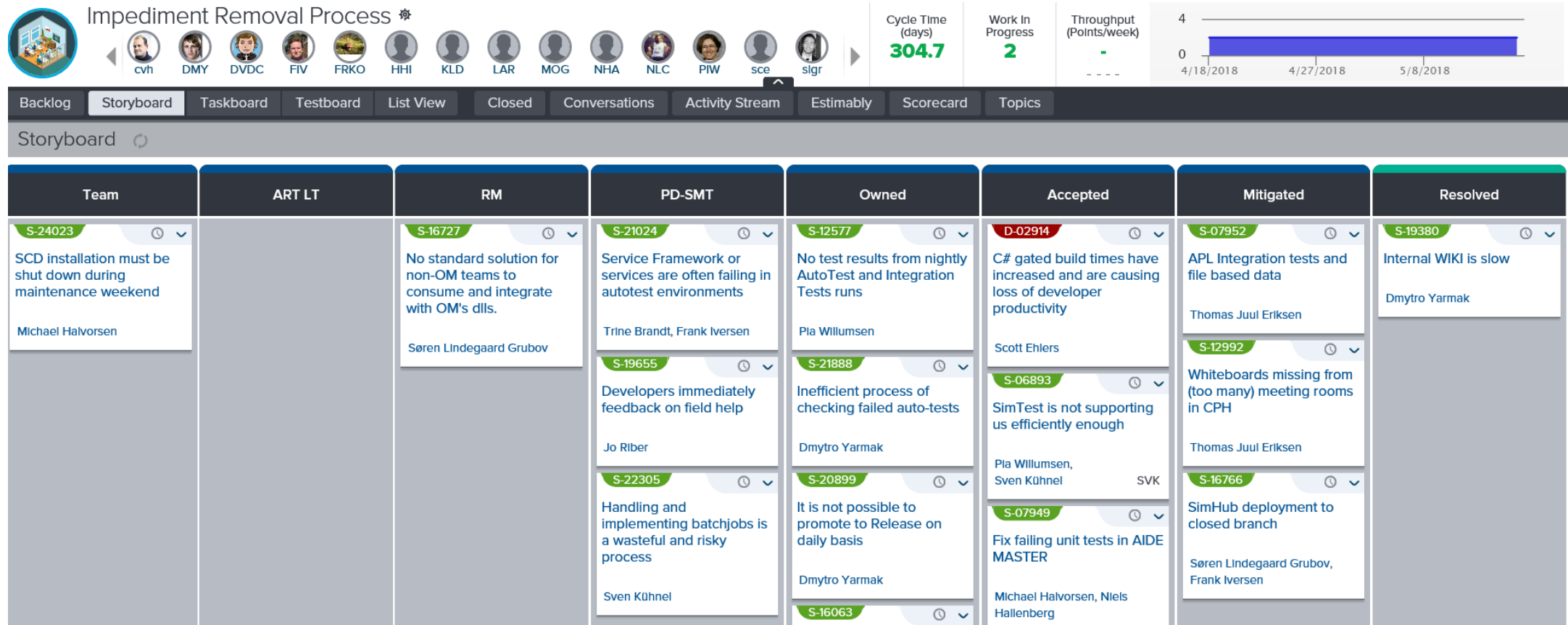
IMPEDIMENTS

MAKE'EM GO AWAY!



IMPEDIMENTS

MAKE'EM GO AWAY!



IMPEDIMENTS

MAKE'EM GO AWAY!

Process

SM – RTE – AC

People

Dev. Man.

Product

PO – PM – PPM

Technology

SE – EA – ETL

BIG ROOM PLANNING FOR REAL





Figure 2. Standard two-day PI Planning agenda



Figure 2. Standard two-day PI Planning agenda

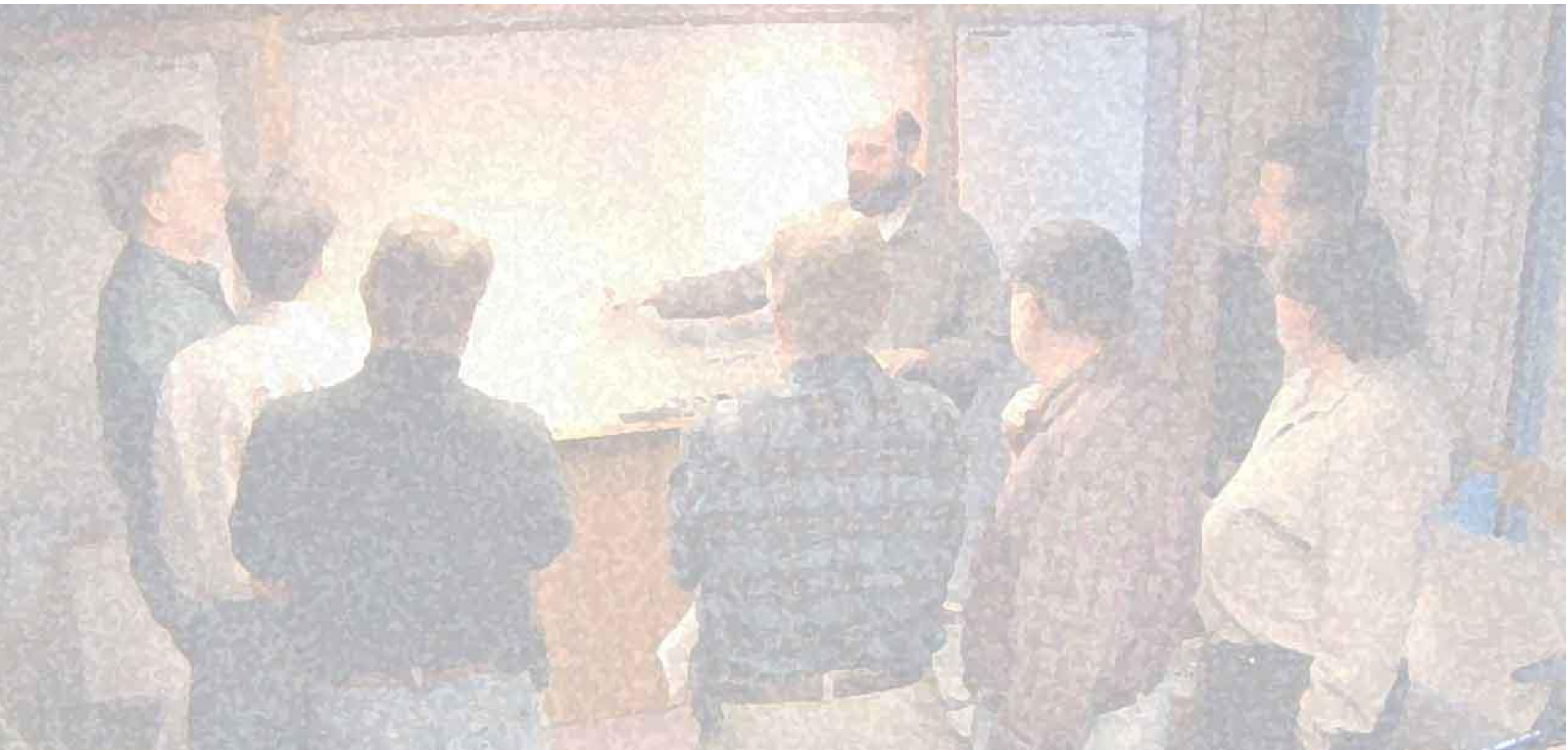




Figure 2. Standard two-day PI Planning agenda



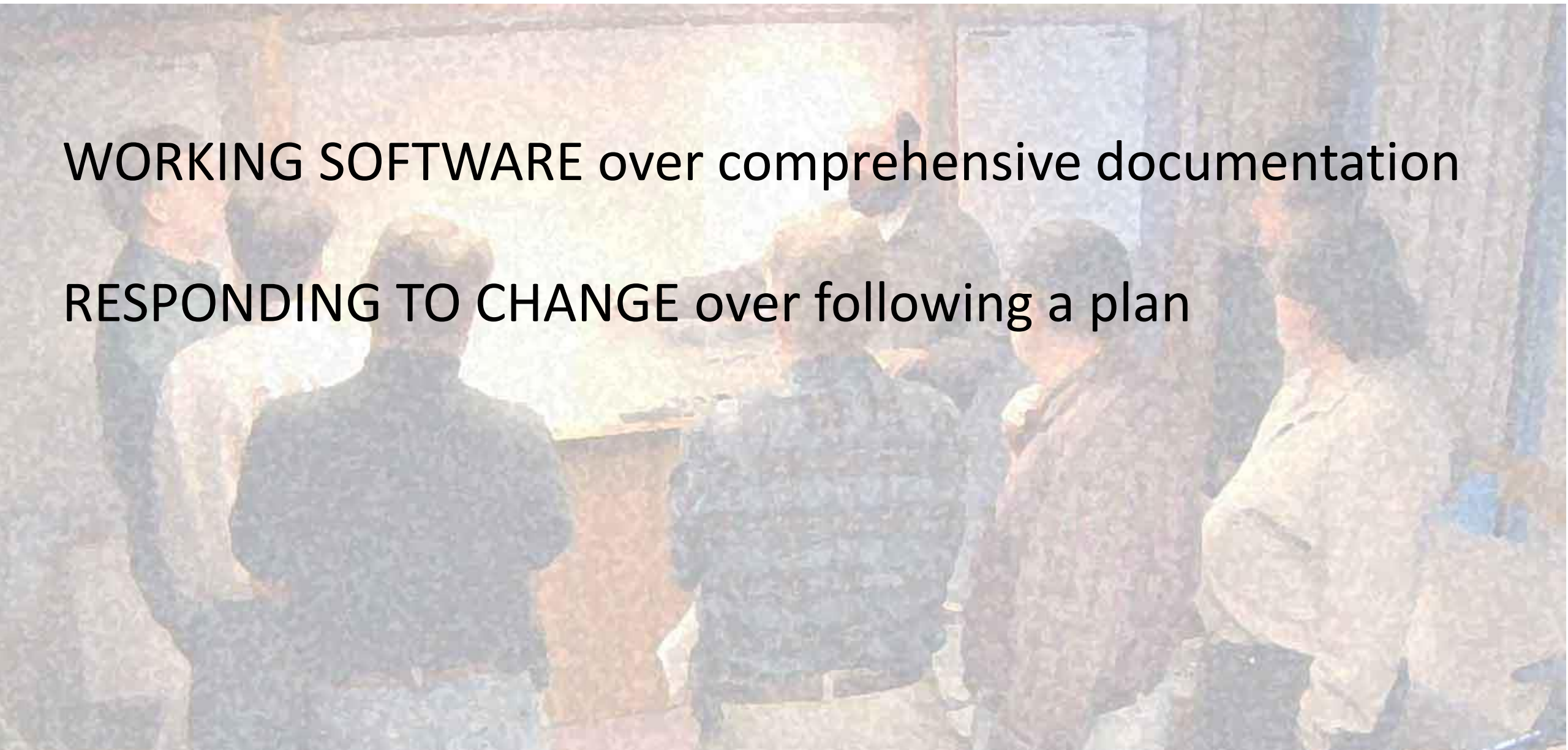
FEATURE BACKLOG REFINEMENT



FEATURE BACKLOG REFINEMENT

WORKING SOFTWARE over comprehensive documentation

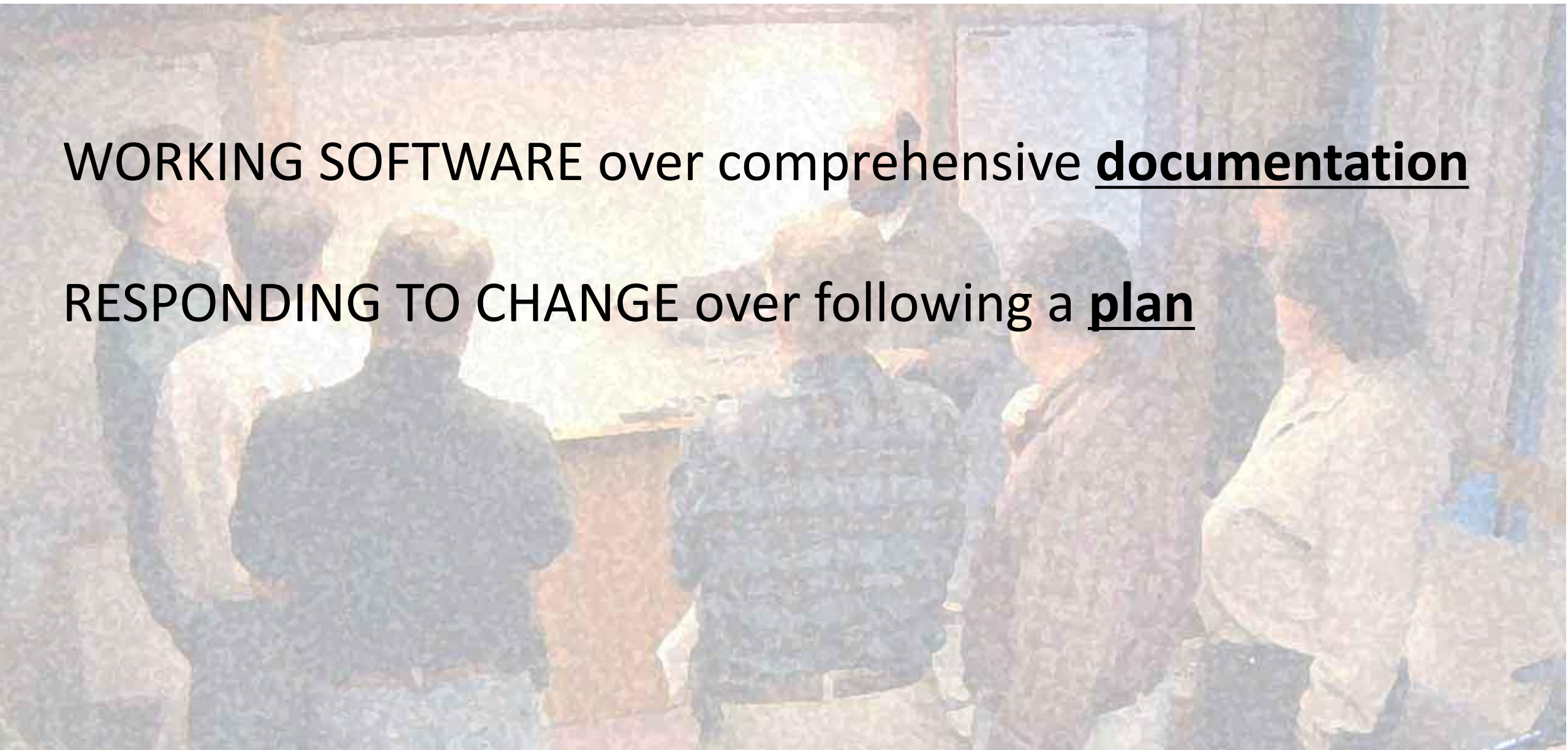
RESPONDING TO CHANGE over following a plan



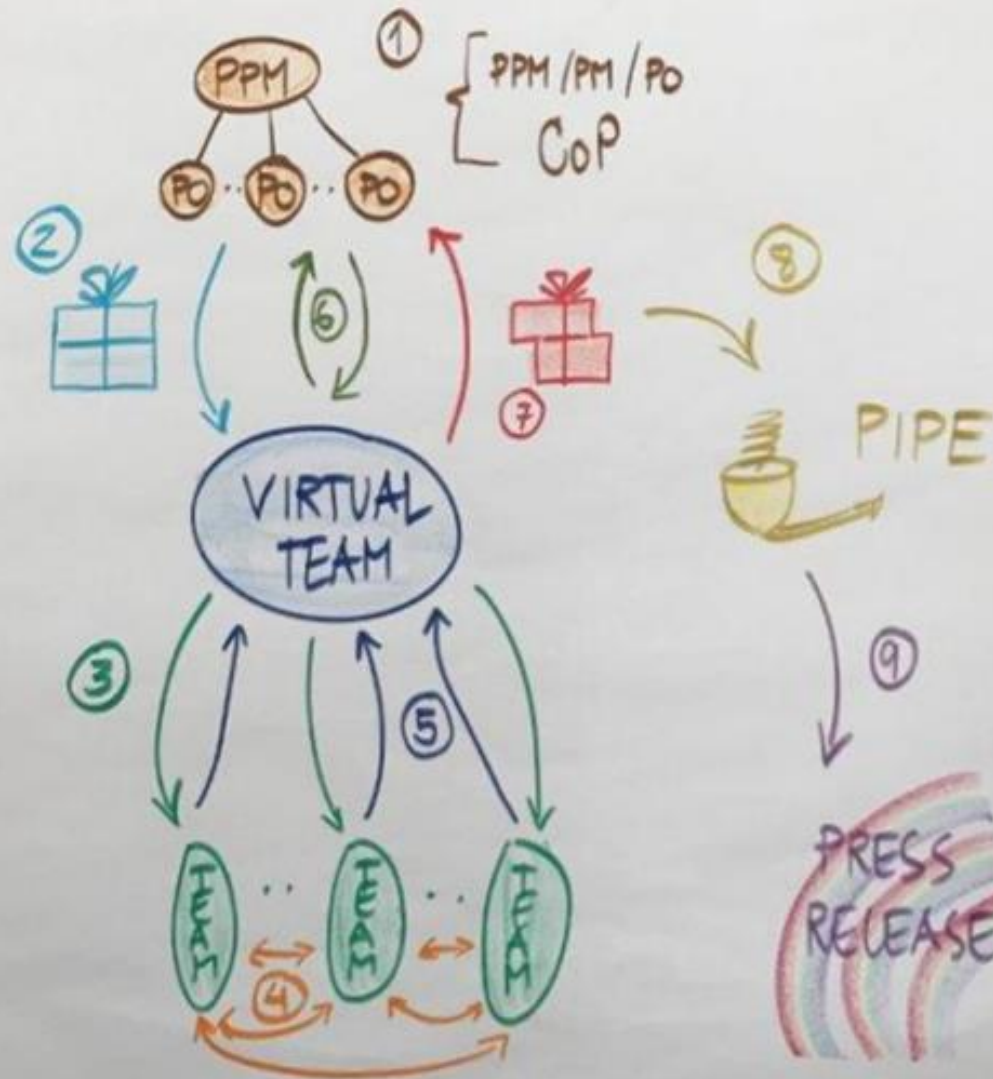
FEATURE BACKLOG REFINEMENT

WORKING SOFTWARE over comprehensive documentation

RESPONDING TO CHANGE over following a plan



FEATURE BACKLOG REFINEMENT



DEVELOPMENT MANAGERS



ART LEADERSHIP TEAM



HR



ACHIEVEMENTS SO FAR

- Development Close to Release: 18 -> 5 weeks
- 2 -> 4 release per year
- Reduced Feature cycle time by almost 30%
- Increased number of Stories delivered by over 30%
- Defects from 1000s to below 200
- Happiness index kept at approx 4 out of 5

<https://www.agilealliance.org/resources/experience-reports/what-safe-doesnt-tell-you/>

Q'n A
(maybe)



Please

**Remember to
rate this session**

Thank you!

